



# **STANDARD FITTINGS PN 16**

## **INOX AISI 316**

EB TECH s.a.s.  
Via N. Sauro 90  
16019 RONCO SCRIVIA GE

Tel.: +39 010 9642633

Fax: +30 010 9760014

[www.ebtech.it](http://www.ebtech.it)

[info@ebtech.it](mailto:info@ebtech.it)

[ebtech@ebtech.it](mailto:ebtech@ebtech.it)

---

## Materials



## Threads

Stainless steel AISI 316 Microcast  
PN 16

Male thread Taper BSPT from 1/8" to 2"  
Female thread Parallel BSPP from 1/8" to 2"

### Pressure - Temperature ratings

Temperature °C	Maximum working pressure Bar
-20 to 40	20
100	16,5
150	15
200	14
220	13,5

Pressure for intermediate temperatures may be determined by interpolation method  
Temperatures indicated are related to the internal fluid flow  
External piping loads, stress and moments over external walls are not taken in consideration

## Materiali



## Filettature

Acciaio Inox AISI 316 Microfuso  
PN 16

Filetto maschio conico BSPT da 1/8" a 2"  
Filetto femmina cilindrico BSPP da 1/8" a 2"

### Intervalli Pressione - Temperatura

Temperatura °C	Pressione d'esercizio massima Bar
-20 a 40	20
100	16,5
150	15
200	14
220	13,5

La pressione per temperature intermedie può essere determinata attraverso il metodo d'interpolazione  
Le temperature indicate sono quelle del fluido interno  
I carichi, le tensioni e i momenti agenti sulle pareti esterne non sono presi in considerazione

## Materiales



## Roscas

Microfusión de Acero Inoxidable AISI 316  
PN 16

Rosca macho BSPT de 1/8" a 2"  
Rosca hembra BSPP de 1/8" a 2"

### Rangos de Presión - Temperatura

Temperatura °C	Presión máxima de trabajo Bar
-20 a 40	20
100	16,5
150	15
200	14
220	13,5

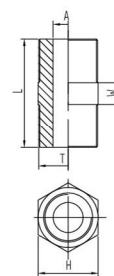
La presión para temperaturas intermedias se puede determinar mediante el método de interpolación  
Las temperaturas indicadas son las del fluido interno  
Cargas, tensiones y momentos que actúan sobre las paredes externas no se toman en cuenta

nipple BSPT thread > nippo conico BSPT > adaptador rosca macho cónica BSPT

1410



CODE	T	L	A	W	H (Hex)	
K410MF18	1/8"	20	5,5	4	11	10
K410MF14	1/4"	25	8	4	14,5	10
K410MF38	3/8"	27	11,5	5	18,5	10
K410MF12	1/2"	34	15	5	22,5	10
K410MF34	3/4"	36,5	20,5	5,5	28	10
K410MF1	1"	42	26	6	34	10
K410MF14	1-1/4"	47,5	34,5	6,5	44	10
K410MF12	1-1/2"	47,5	40	6,5	50	10
K410MF2	2"	57	51	7	62	10

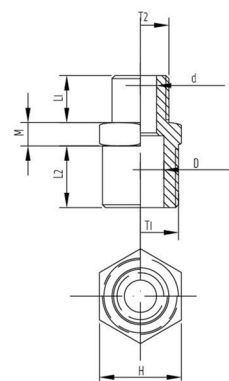


reduced nipple BSPT thread > nippo conico ridotto BSPT > reducciòn rosca macho cónica BSPT

1412



CODE	T1	T2	L1	L2	M	d	D	H (Hex)	
K412MF1418	1/4"	1/8"	8	10,5	4	5,5	8	14,5	10
K412MF3818	3/8"	1/8"	8	11	5	5,5	11,5	18	10
K412MF3814	3/8"	1/4"	10,5	11	5	8	11,5	18	10
K412MF1214	1/2"	1/4"	10,5	14,5	5	8	15	22	10
K412MF1238	1/2"	3/8"	11	14,5	5	11,5	15	22	10
K412MF3438	3/4"	3/8"	11	15,5	5,5	11,5	20,5	28	10
K412MF3412	3/4"	1/2"	14,5	15,5	5,5	15	20,5	28	10
K412MF138	1"	3/8"	11	18	6	11,5	26	35	10
K412MF112	1"	1/2"	14,5	18	6	15	26	35	10
K412MF134	1"	3/4"	15,5	18	6	20,5	26	35	10
K412MF1434	1-1/4"	3/4"	15,5	20,5	6,5	20,5	34,5	43,5	10
K412MF141	1-1/4"	1"	18	20,5	6,5	26	34,5	43,5	10
K412MF1121	1-1/2"	1"	18	20,5	6,5	26	40	49	10
K412MF12114	1-1/2"	1-1/4"	20,5	20,5	6,5	34,5	40	49	10
K412MF21	2"	1"	18	25	7	26	51	61,5	10
K412MF2114	2"	1-1/4"	20,5	25	7	34,5	51	61,5	10
K412MF2112	2"	1-1/2"	20,5	25	7	40	51	61,5	10

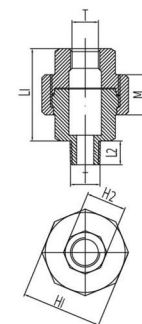


nipple MIF in 3 pieces > nippo MIF in 3 pezzi > adaptador MIH en 3 piezas

1420-3P



CODE	T	L1	L2	M	H1 (Hex)	H2 (Hex)	
K420MF183P	1/8"	30	8	13	26	13	10
K420MF143P	1/4"	33,5	10,5	13,5	29	16,5	10
K420MF383P	3/8"	36,5	11	15	34	20	10
K420MF123P	1/2"	39,5	14,5	16	37	24,5	10

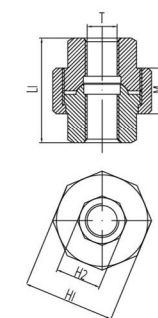


sleeve FIF in 3 pieces > manicotto FIF in 3 pezzi > manguito H/H en 3 piezas

1425-3P



CODE	T	L1	M	H1 (Hex)	H2 (Hex)	
K425MF183P	1/8"	30	13	26	13	10
K425MF143P	1/4"	33,5	13,5	29	16,5	10
K425MF383P	3/8"	36,5	15	34	20	10
K425MF123P	1/2"	39,5	16	37	24,5	10
K425MF343P	3/4"	42,5	17	44	30	10
K425MF13P	1"	50	20	52,5	37	10

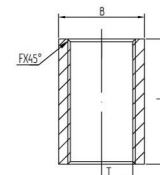


sleeve FIF > manicotto FIF > manguito H/H

1425



CODE	T	L	F	B	
K425MF18	1/8"	17	0,6	13	10
K425MF14	1/4"	24	1	16,5	10
K425MF38	3/8"	25	1	20	10
K425MF12	1/2"	32	1,2	24,5	10
K425MF34	3/4"	35	1,2	30	10
K425MF1	1"	41	1,6	37	10
K425MF14	1-1/4"	45	1,6	46,5	10
K425MF112	1-1/2"	45	1,6	53	10
K425MF2	2"	54	1,6	65	10

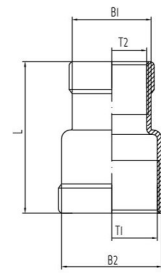


reduced FIF sleeve > manicotto ridotto FIF > manguito reducción HIH

1426



CODE	T1	T2	B1	B2	L	☐
1426MF1418	1/4	1/8	13	16,5	25	10
1426MF3814	3/8	1/4	16,5	20	26	10
1426MF1238	1/2	3/8	20	24,5	34	10
1426MF3412	3/4	1/2	24,5	30	36	10
1426MF134	1	3/4	30	37,5	42	10
1426MF1141	1-1/4	1	37,5	46,5	48	10
1426MF11214	1-1/2	1-1/4	46	53	52	10
1426MF2112	2	1-1/2	53	65,5	58	10

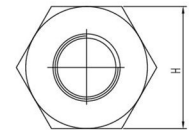
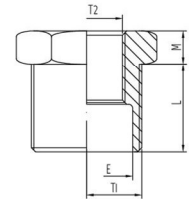


MIF reduced > riduzione MIF > reducción MIH

1440



CODE	T1	T2	E	L	M	H (Hex)	☐
1440MF1418	1/4"	1/8"	8	10,5	4	14,5	10
1440MF3818	3/8"	1/8"	11,5	11	5	18,5	10
1440MF3814	3/8"	1/4"	11,5	11	5	18,5	10
1440MF1214	1/2"	1/4"	15	14,5	5	22,5	10
1440MF1238	1/2"	3/8"	15	14,5	5	22,5	10
1440MF3438	3/4"	3/8"	20,5	15,5	5,5	28	10
1440MF3412	3/4"	1/2"	20,5	15,5	5,5	28	10
1440MF112	1"	1/2"	26	18	6	35	10
1440MF134	1"	3/4"	26	18	6	35	10
1440MF11434	1-1/4"	3/4"	34,5	20,5	6,5	44	10
1440MF1141	1-1/4"	1"	34,5	20,5	6,5	44	10
1440MF1121	1-1/2"	1"	40	20,5	6,5	49,5	10
1440MF11214	1-1/2"	1-1/4"	40	20,5	6,5	49,5	10
1440MF2114	2"	1-1/4"	51	25	7	61,5	10
1440MF2112	2"	1-1/2"	51	25	7	61,5	10

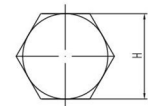
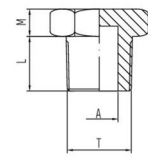


male plug BSPT thread > tappo maschio conico BSPT > tapón rosca macho BSPT

1450



CODE	T	L	M	A	H (Hex)	☐
1450MF18	1/8"	8	4	5,5	12,5	10
1450MF14	1/4"	10,5	4	8	15	10
1450MF38	3/8"	11	5	11,5	18,5	10
1450MF12	1/2"	14,5	5	15	22,5	10
1450MF34	3/4"	15,5	5,5	20,5	28	10
1450MF1	1"	18	6	26	35	10
1450MF14	1-1/4"	20,5	6,5	34,5	44	10
1450MF12	1-1/2"	20,5	6,5	40	50,5	10
1450MF2	2"	25	7	51	62,5	10

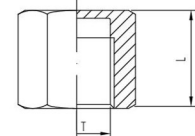
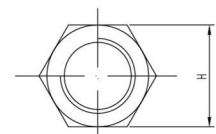


female plug > tappo femmina > tapón rosca hembra

1455



CODE	T	L	H (Hex)	☐
1455MF18	1/8"	12,5	13	10
1455MF14	1/4"	16	16,5	10
1455MF38	3/8"	16,5	20	10
1455MF12	1/2"	21	24,5	10
1455MF34	3/4"	22,5	30	10
1455MF1	1"	26	37	10
1455MF114	1-1/4"	29	46,5	10
1455MF112	1-1/2"	29	53	10
1455MF2	2"	33,5	65	10

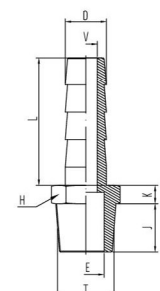


barb connector > portagomma > espiga para manguera

1469



CODE	T	E	J	K	L	V	D	H (Hex)	☐
1469MF18T6	1/8"	5,7	11	6,3	23,7	4	6,7	13	10
1469MF14T9	1/4"	8	10,5	4	28	5	9	15	10
1469MF38T11	3/8"	11,5	11	5	33	7	11,5	18	10
1469MF12T15	1/2"	15	14,5	5	38	10,5	15	22	10
1469MF34T20	3/4"	20,5	15,5	5,5	45	15	20	28	10
1469MF1T27	1"	26	18	6	52	22	27	35	10
1469MF114T33	1-1/4"	34,5	20,5	6,5	52	27,5	33	44	10
1469MF112T39	1-1/2"	40	20,5	6,5	56	34	39,5	50	10
1469MF2T52	2"	51	25	7	60	45	52	61,5	10

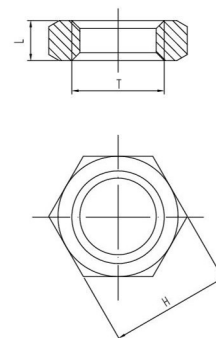


bulkhead locking nut > ghiera passaparete > *contratuercia*

1475



CODE	T	L	H (Hex)	
I475MF4	1/4	6	18	10
I475MF38	3/8	6	24	10
I475MF12	1/2	7	30	10
I475MF34	3/4	7	34	10
I475MF1	1	9	42,5	10
I475MF14	1-1/4	11	52	10
I475MF12	1-1/2	11	58	10
I475MF2	2	13	72	10

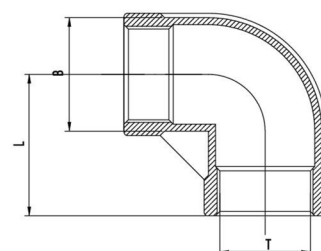


elbow FIF > gomito FIF > *codo HIH*

1480



CODE	T	L	B	
I480MF18	1/8"	17	13	10
I480MF14	1/4"	19	16,5	10
I480MF38	3/8"	23	20	10
I480MF12	1/2"	27	24,5	10
I480MF34	3/4"	32	30	10
I480MF1	1"	38	37,5	10
I480MF14	1-1/4"	45	46,5	10
I480MF12	1-1/2"	48	53	10
I480MF2	2"	57	65,5	10

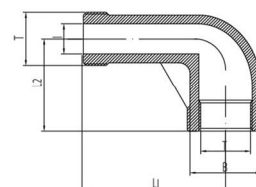


elbow MIF > gomito MIF > *codo MIH*

1485



CODE	T	B	L1	L2	I	
I485MF18	1/8"	13	26	17	5,5	10
I485MF14	1/4"	16,5	27	19	8	10
I485MF38	3/8"	19,7	29	23	11,5	10
I485MF12	1/2"	24,5	35	27	15	10
I485MF34	3/4"	30	40	32	20,5	10
I485MF1	1"	37,5	46	38	26	10
I485MF14	1-1/4"	46,5	54	45	34,5	10
I485MF12	1-1/2"	53	57	48	40	10
I485MF2	2"	65,5	70	57	51	10



tee FIFIF > t FIFIF > t H/H/H

1490



CODE	T	L	B	
I490MF18	1/8"	17	13	10
I490MF14	1/4"	19	16,5	10
I490MF38	3/8"	23	20	10
I490MF12	1/2"	27	24,5	10
I490MF34	3/4"	32	30	10
I490MF1	1"	38	37,5	10
I490MF14	1-1/4"	45	46,5	10
I490MF12	1-1/2"	48	53	10
I490MF2	2"	57	65,5	10

